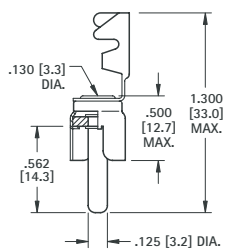


# PHONO PLUGS

• Mates with .125 (3.2) diameter jacks

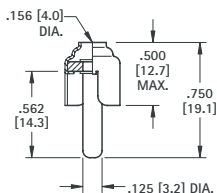
## STRAIN RELIEF LUG CRIMPS TO WIRE INSULATION



**MATERIAL:**  
**Shell:** Steel, Tin Plate  
**Pin:** Brass, Nickel Plate

**CAT. NO. 565**

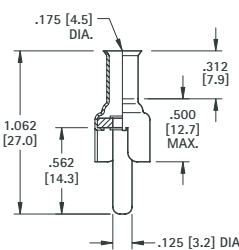
## CONVENTIONAL TYPE



**MATERIAL:**  
**Shell:** Brass, Nickel Plate  
**Pin:** Brass, Nickel Plate

**CAT. NO. 561**

## CRIMP OR SOLDER TYPE EXTRA LONG HANDLE



**MATERIAL:**  
**Shell:** Steel, Tin Plate  
**Pin:** Brass, Nickel Plate

**CAT. NO. 567**

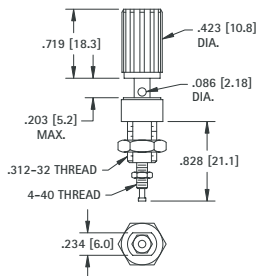
# BINDING POSTS

All Keystone binding posts are designed to prevent accidental contact with current carrying parts. They feature a "limited opening" captivated head to insure safety. Ideal for audio circuitry, R.F. circuitry, oscilloscopes, power supplies and various other applications.

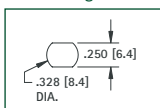
These multi-purpose binding posts feature high current rating, captivated heads and anti-rotation stud mounting.

**Note:** Binding Posts accept .175" (4.5) Banana Plugs, .080" (2.08) Tip Plugs, Spade Lugs, Alligator Clips, Wires and EZ hooks.

## STANDARD BINDING POST



### Mounting Detail

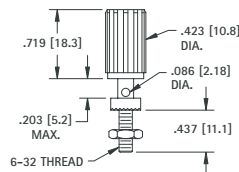


**MATERIAL:**  
**Stud:** Brass per QQ-B-626  
**Plating:** Silver Plate  
**Insulation:** Nylon  
**Current Rating:** 15 Amps  
**Stud to Panel Capacitance:** 3.3 pF Nominal

For panels up to .281 (7.1) thick

CAT. NO.	COLOR
7004	RED
7005	BLACK

## UNINSULATED BINDING POST

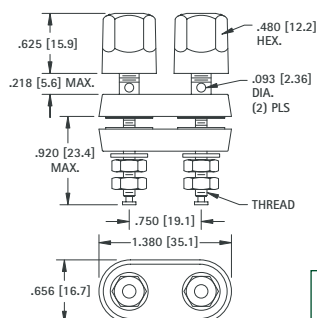


**MATERIAL:**  
**Stud:** Brass per QQ-B-626  
**Plating:** Nickel Plate  
**Insulation:** Nylon  
**Current Rating:** 15 Amps, 1000V AC Working

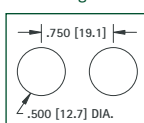
For panels up to .313 (8.0) thick

CAT. NO.	COLOR
7006	RED
7007	BLACK

## STANDARD DUAL HEX HEAD



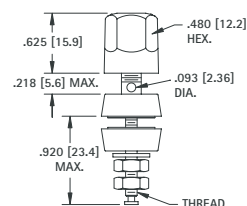
### Mounting Detail



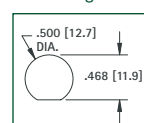
**MATERIAL:**  
**Stud:** Brass per ASTM B-16.  
**Insulation:** Nylon  
**Current Rating:** 30 Amps, 1000V AC Working

GOLD PLATE		NICKEL PLATE	
CAT. NO.	THREAD	CAT. NO.	THREAD
4108	8-32	7018	8-32
4109	10-32	7019	10-32

## STANDARD HEX HEAD



### Mounting Detail



**MATERIAL:**  
**Stud:** Brass per ASTM B-16.  
**Insulation:** Nylon  
**Current Rating:** 30 Amps, 1000V AC Working

GOLD PLATE			NICKEL PLATE		
CAT. NO.	THREAD	COLOR	CAT. NO.	THREAD	COLOR
4096	8-32	RED	4091	8-32	RED
4097	8-32	BLACK	4092	8-32	BLACK
7016	10-32	RED	4093	10-32	RED
7017	10-32	BLACK	4094	10-32	BLACK
7023	10-32	WHITE	4198	10-32	WHITE
7024	10-32	YELLOW	4199	10-32	YELLOW

MARKING  
 A  
 B  
 PHONO PLUGS & BINDING POSTS  
 HEAD  
 O.D.  
 THREAD